

ASSESSMENT CENTER FACTSHEET: FALL 2004 TO FALL 2014

The purpose of this report is to focus on students who have been served by the Assessment Center at LATTC. It is important to note that while most students who received assessment/placement services enrolled in credit coursework at Trade, there are some students who did not do so. Please see the table below for more details regarding student enrollment status.

Enrollment Status	Fall 2004	Fall 2005	Fall 2006	Fall 2007	Fall 2008	Fall 2009	Fall 2010	Fall 2011	Fall 2012	Fall 2013	Fall 2014
In Graded Headcount	1913	2450	812	905	1453	2046	309	736	198	305	435
Attempting Zero Units	1165	2039	383	515	884	1554	207	390	109	112	340
Not Enrolled at Trade	641	3686	29	35	101	448	19	69	10	31	401
Total Students Tested:	3719	8175	1224	1455	2438	4048	535	1195	317	448	1176

The demographic details below are based on information from all students who received assessment/placement services in the Fall term of the respective year, including students who did not enroll in credit coursework.

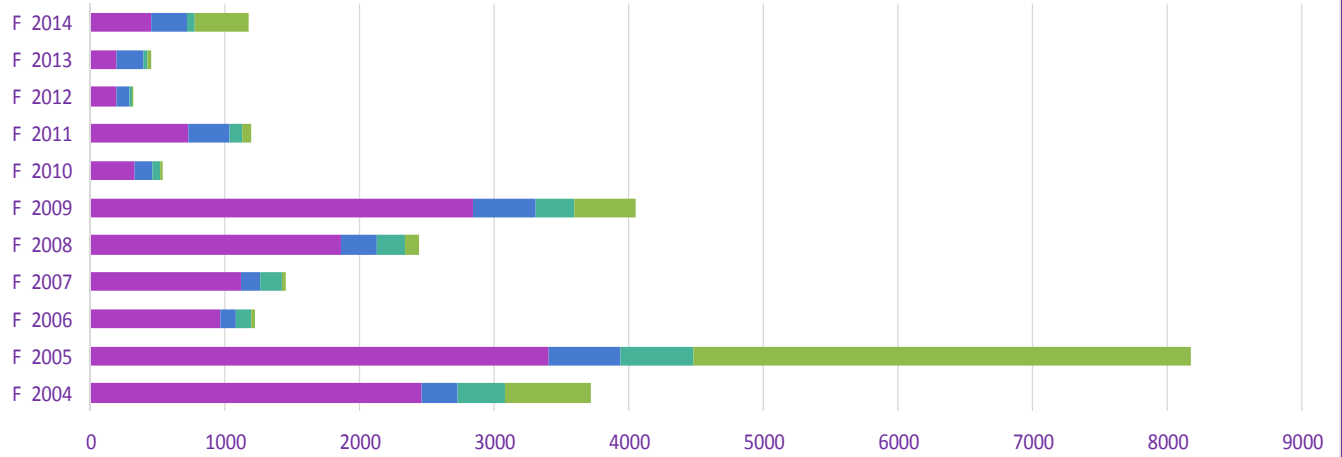
Demographics	Fall 2004	Fall 2005	Fall 2006	Fall 2007	Fall 2008	Fall 2009	Fall 2010	Fall 2011	Fall 2012	Fall 2013	Fall 2014
Total Students Served	3719	8175	1224	1455	2438	4048	535	1195	317	448	1176
Gender	2004	2005	2006	2007	2008	2009	2010	2011	2012	2013	2014
Female	2020	4382	719	820	1269	2056	277	608	170	232	538
Male	1699	3793	505	635	1169	1992	258	587	147	216	638
Race	2004	2005	2006	2007	2008	2009	2010	2011	2012	2013	2014
African-American	1280	2864	470	561	896	1478	196	385	89	90	261
Asian/P.I.	220	482	113	97	96	101	15	52	16	25	39
Hispanic	1940	4220	558	693	1283	2033	278	649	199	288	754
Other	29	78	14	13	23	43	7	19	1	9	32
Unknown	110	269	44	57	90	306	21	44	4	18	29
White	140	262	25	34	50	87	18	46	8	18	61
Age Group	2004	2005	2006	2007	2008	2009	2010	2011	2012	2013	2014
Under 20	1572	3298	436	542	904	1403	143	457	134	119	288
20-24	747	1808	309	363	639	1105	150	305	85	145	382
25-34	709	1692	266	292	495	795	145	222	49	93	298
Over 34	691	1377	213	258	400	745	97	211	49	91	208

Placements	Fall 2004	Fall 2005	Fall 2006	Fall 2007	Fall 2008	Fall 2009	Fall 2010	Fall 2011	Fall 2012	Fall 2013	Fall 2014
Math											
College Level	11	23	5	6	15	20	28	80	29	43	88
1 Below	51	156	41	61	93	151	15	58	30	36	75
2 Below	254	547	99	291	554	906	0	0	0	48	136
3 or Lower	3278	7090	1007	876	1427	2466	416	914	201	227	592
Total	3594	7816	1152	1234	2089	3543	459	1052	260	354	891
English/Reading	2004	2005	2006	2007	2008	2009	2010	2011	2012	2013	2014
College Level	56	168	25	26	38	69	8	65	16	32	81
1 Below	764	1736	239	185	248	515	89	296	84	142	313
2 Below	1169	2542	415	623	1062	1897	233	461	97	133	384
3 or Lower	1214	2590	342	344	562	856	90	170	33	28	112
ESL	365	747	83	129	292	379	56	79	41	21	31
Total	3568	7783	1104	1307	2202	3716	476	1071	271	356	921

Source: LACCD Student Information System (DEC) database. Retrieved on 2/5/15. Prepared by LATTC Office of Institutional Effectiveness. For more information please contact Ani Zarpas at ZarpasA@lattc.edu.

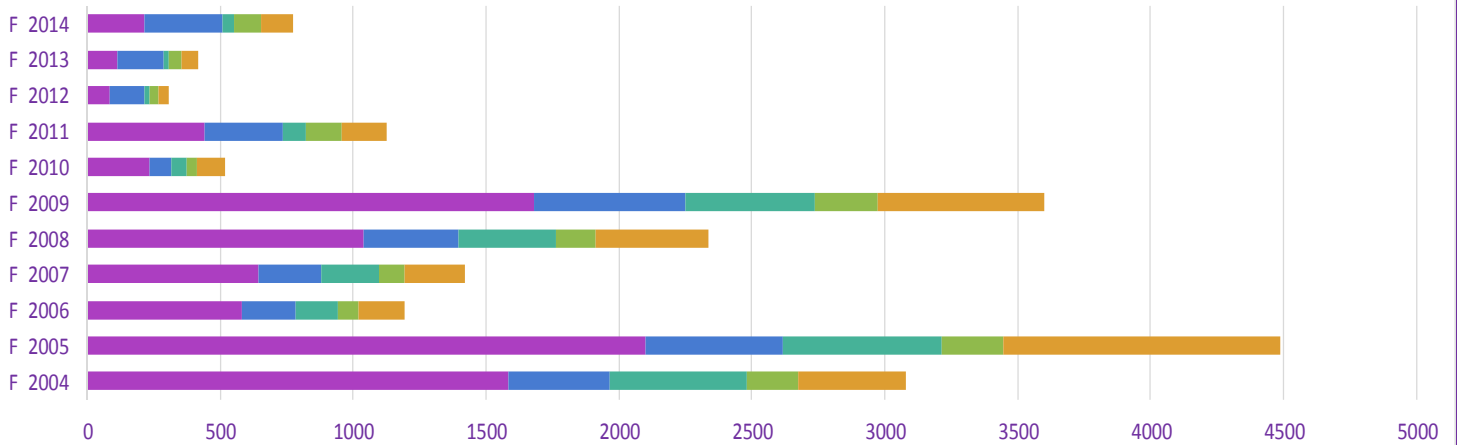
ASSESSMENT CENTER FACTSHEET: FALL 2004 TO FALL 2014

Incoming Status of Students Served by the Assessment Center
 Fall 2004 to Fall 2014



	F 2004	F 2005	F 2006	F 2007	F 2008	F 2009	F 2010	F 2011	F 2012	F 2013	F 2014
New Students	2460	3408	962	1113	1861	2843	327	723	190	194	453
Continuing Students	269	532	118	150	269	469	136	312	94	195	264
Returning Students	349	544	115	157	207	287	53	90	23	28	58
Tested, Status Unknown	641	3691	29	35	101	449	19	70	10	31	401

Educational Goals of Students Served by the Assessment Center
 Fall 2004 to Fall 2014



	F 2004	F 2005	F 2006	F 2007	F 2008	F 2009	F 2010	F 2011	F 2012	F 2013	F 2014
Vocational	1582	2101	581	641	1039	1679	232	440	82	114	214
Transfer	385	515	201	238	359	569	85	295	131	172	292
Transitional	514	598	162	217	362	489	55	86	21	20	45
Associate's	192	231	74	97	153	237	42	138	33	46	102
Undecided	405	1044	177	227	424	626	102	167	40	65	119

*Student Educational Goal statistics are based on information from actively enrolled students.